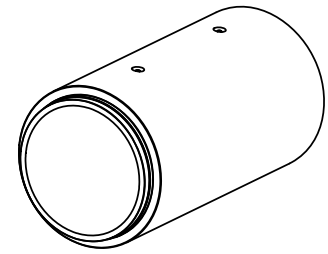
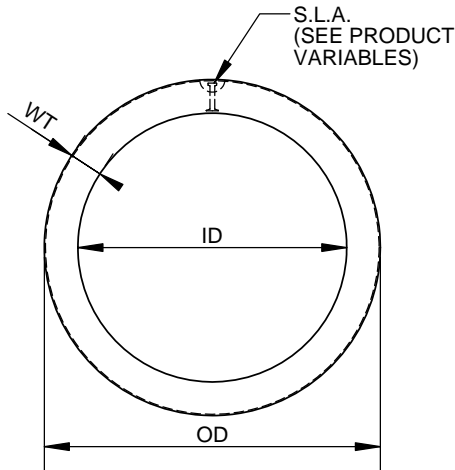


NOTES:

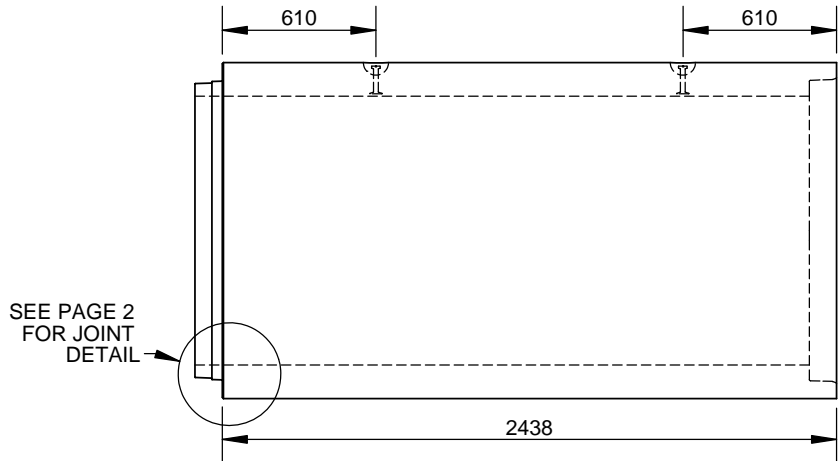
1. S.L.A. ON SINGLE OR DOUBLE CAGE DESIGN TO BE LOCATED ANYWHERE ON THE CIRCUMFERENCE
2. ENSURE S.L.A. RECESSES ARE FREE DRAINING WHEN STORE IN THE YARD



ISOMETRIC VIEW



TYPICAL SECTION



SIDE VIEW

PRODUCT VARIABLES

| PART ID | NOMINAL SIZE | ID | OD | WT | MASS (KG) | MFG | SLA | | MIN. SLING ANGLE |
|-----------|--------------|------|------|--------|-----------|-----|-------------|-----------|------------------|
| | | | | | | | SPEC. | f'c (MPa) | |
| PA1050X4 | 1050 | 1067 | 1334 | 133 | 3115 | GUE | 4T 3-1/2 | 30 | 60 |
| | | | | | | OAK | 4T 3-1/2 DH | 30 | 60 |
| PA1200X48 | 1200 | 1219 | 1473 | 127 BW | 3475 | OAK | 4T 3-1/2 DH | 30 | 60 |
| PA1200X49 | 1200 | 1219 | 1511 | 146 CW | 3810 | GUE | 4T 4-1/4 | 30 | 60 |
| PA1350X48 | 1350 | 1372 | 1652 | 140 BW | 4115 | OAK | 4T 4-1/4 DH | 30 | 60 |
| PA1350X49 | 1350 | 1372 | 1689 | 159 CW | 4731 | GUE | 4T 4-3/4 | 30 | 60 |
| | | | | | | OAK | 4T 4-1/4 DH | 30 | 60 |
| PA1500X4 | 1500 | 1524 | 1829 | 152 | 5180 | GUE | 4T 4-3/4 | 35 | 60 |
| | | | | | | OAK | 4T 4-1/4 DH | 30 | 60 |
| PA1650X4 | 1650 | 1676 | 2007 | 165 | 6101 | GUE | 4T 4-3/4 | 40 | 60 |
| PA1800X4 | 1800 | 1829 | 2184 | 178 | 6991 | GUE | 8T 5-3/4 | 30 | 60 |
| PA1950X4 | 1950 | 1981 | 2362 | 191 | 8110 | GUE | 8T 5-3/4 | 40 | 60 |
| PA2100X4 | 2100 | 2134 | 2540 | 203 | 9290 | GUE | 8T 6-1/4 | 30 | 60 |
| PA2250X4 | 2250 | 2286 | 2718 | 216 | 10520 | GUE | 8T 6-3/4 | 30 | 60 |
| PA2400X4 | 2400 | 2438 | 2896 | 229 | 11880 | GUE | 8T 7-1/8 | 30 | 60 |
| PA2550X4 | 2550 | 2591 | 3073 | 241 | 12637 | GUE | 8T 7-1/8 | 40 | 60 |
| PA2700X4 | 2700 | 2743 | 3251 | 254 | 14035 | GUE | 8T 8-1/4 | 40 | 60 |
| PA3000X4 | 3000 | 3048 | 3607 | 279 | 17185 | GUE | 20T 10 | 40 | 60 |

ALL DIMENSIONS ARE IN mm
DRAWINGS ARE NOT TO SCALE
VIEWS ARE AS INSTALLED
STANDARD CLASS: 65D, 100D, 140D
LIFTING RIGGING CODE: S2S-SP
REF TO REG DWG: LH-PA02

MIN. CONC STRENGTH 30-40 MPa
BASED ON CLASS
CLEAR COVER DEPENDS ON CAGE
DESIGN. REF TO CSA 257.2-14
TOLERANCES TO CSA A257.2-14

CON CAST PIPE (CCP) STANDARD DRAWING

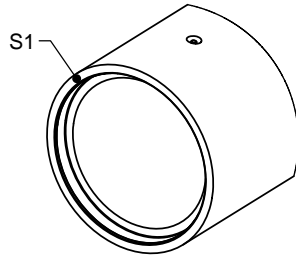
STD. CSA 257.2 REV 2014 DOC PAXXXX4

**REINFORCED CONCRETE PIPE
1050 - 3000 mm DIAMETER
SIZE GUIDE**

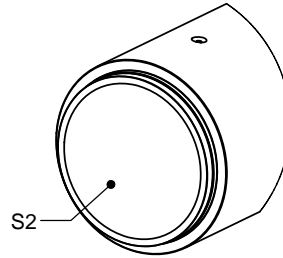
| | | | |
|------|--|------|-----------|
| 8 | SLA UPDATE, RIGGING REF, CSA A257.2 UPDATE | RM | 5APR16 |
| 7 | SLA UPDATE FOR 2550 | RM | 7/NOV/14 |
| 6 | REVIEWED, SLA NOTES | SW | 17/SEP/14 |
| REV. | DESCRIPTION | ENG. | DATE |

| | | | | |
|----------------|------------------|------------------|--------------|----------------|
| DRAWN BY SW | CHECKED BY CW | DATE 4/JAN/11 | FILE Pipe | PAGE 1 OF 2 |
|----------------|------------------|------------------|--------------|----------------|

| |
|-----------------------------|
| STENCIL (S1) |
| (SIZE) X (CLASS) |
| |
| STENCIL (S2) |
| (CCP-GUELPH / OCP-OAKVILLE) |
| CSA A257.2 |
| (SIZE) X (CLASS) |
| TYPE HSe |
| (DATE OF MFG) |

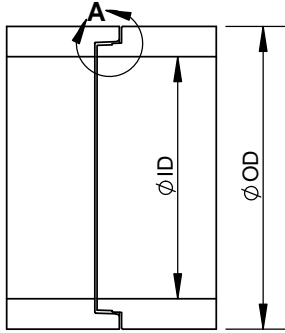


**ISOMETRIC
BELL END VIEW**

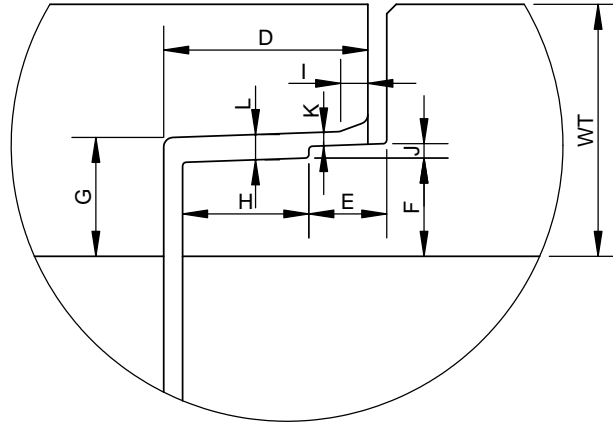


**ISOMETRIC
SPIGOT END VIEW**

ENGINEER STAMP (IF REQUIRED)



**PIPE JOINT
SECTION VIEW**



DETAIL A

| PART ID | NOMINAL SIZE | ID | OD | WT | D | E | F | G | H | I | J | K | L |
|-----------|--------------|------|------|--------|-------|------|-------|-------|------|------|-----|-----|------|
| PA1050X4 | 1050 | 1067 | 1334 | 133 | 108.0 | 41.2 | 53.0 | 62.1 | 66.8 | 15.9 | 7.6 | 3.7 | 11.3 |
| PA1200X48 | 1200 | 1219 | 1473 | 127 BW | 108.0 | 44.5 | 53.0 | 62.1 | 63.5 | 19.1 | 7.6 | 3.7 | 11.3 |
| PA1200X49 | 1200 | 1219 | 1511 | 146 CW | 108.0 | 41.2 | 52.2 | 62.1 | 66.8 | 15.9 | 7.6 | 3.7 | 11.3 |
| PA1350X48 | 1350 | 1372 | 1652 | 140 BW | 108.0 | 44.5 | 49.3 | 58.4 | 63.5 | 22.2 | 7.6 | 3.7 | 11.3 |
| PA1350X49 | 1350 | 1372 | 1689 | 159 CW | 108.0 | 41.2 | 49.5 | 58.4 | 66.8 | 15.9 | 7.6 | 3.7 | 11.3 |
| PA1500X4 | 1500 | 1524 | 1829 | 152 | 120.7 | 53.9 | 55.8 | 64.7 | 66.8 | 22.2 | 7.6 | 3.7 | 11.3 |
| PA1650X4 | 1650 | 1676 | 2007 | 165 | 127.0 | 60.2 | 62.2 | 71.1 | 66.8 | 22.2 | 7.6 | 3.7 | 11.3 |
| PA1800X4 | 1800 | 1829 | 2184 | 178 | 127.0 | 60.2 | 65.7 | 74.6 | 66.8 | 31.8 | 7.6 | 3.7 | 11.3 |
| PA1950X4 | 1950 | 1981 | 2362 | 191 | 127.0 | 57.1 | 71.4 | 82.2 | 69.9 | 31.8 | 8.9 | 4.4 | 13.3 |
| PA2100X4 | 2100 | 2134 | 2540 | 203 | 127.0 | 57.1 | 77.7 | 88.5 | 69.9 | 31.8 | 8.9 | 4.4 | 13.3 |
| PA2250X4 | 2250 | 2286 | 2718 | 216 | 127.0 | 57.1 | 84.1 | 94.9 | 69.9 | 31.8 | 8.9 | 4.4 | 13.3 |
| PA2400X4 | 2400 | 2438 | 2896 | 229 | 127.0 | 57.1 | 90.4 | 101.2 | 69.9 | 31.8 | 8.9 | 4.4 | 13.3 |
| PA2550X4 | 2550 | 2591 | 3073 | 241 | 127.0 | 57.1 | 96.4 | 107.5 | 69.9 | 31.8 | 8.9 | 4.4 | 13.3 |
| PA2700X4 | 2700 | 2743 | 3251 | 254 | 127.0 | 57.1 | 103.1 | 114.0 | 69.9 | 31.8 | 8.9 | 4.4 | 13.3 |
| PA3000X4 | 3000 | 3048 | 3607 | 279 | 152.0 | 82.1 | 99.9 | 110.8 | 69.9 | 31.8 | 8.9 | 4.4 | 13.3 |

ALL DIMENSIONS ARE IN mm
DRAWINGS ARE NOT TO SCALE

MIN. CONC STRENGTH 30-40 MPa
BASED ON CLASS
CLEAR COVER DEPENDS ON CAGE
DESIGN. REF TO CSA 257.2
TOLERANCES TO CSA A257.2

CON CAST PIPE (CCP) STANDARD DRAWING

STD: CSA 257.2 REV 2014 DOC: PAXXXXX4

TITLE: **REINFORCED CONCRETE PIPE
1050 - 3000 mm DIAMETER
JOINT AND STENCILING DETAILS**

| | | | |
|------|------------------------------|------|-----------|
| 4 | CSA A257.2-14 | SW | 5APR2016 |
| 3 | CORRECT ERROR F AND G VALUES | SW | 12/JUN/12 |
| 2 | ADD ENG. STAMP | CW | 19/OCT/11 |
| REV. | DESCRIPTION | ENG. | DATE |

| | | | | |
|----------------|------------------|------------------|--------------|----------------|
| DRAWN BY SW | CHECKED BY CW | DATE 4/JAN/11 | FILE Pipe | PAGE 2 OF 2 |
|----------------|------------------|------------------|--------------|----------------|