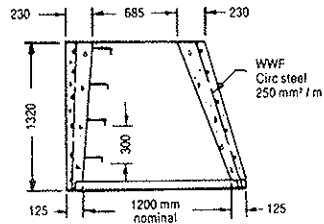
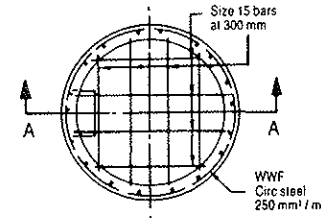


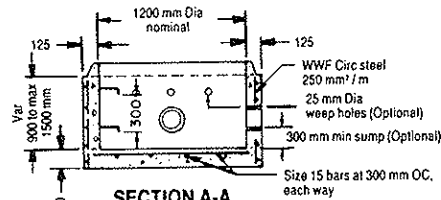
PLAN



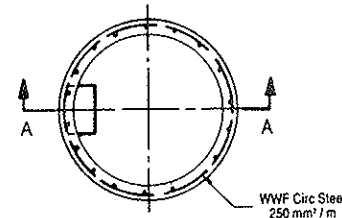
SECTION A-A  
TAPER CONE



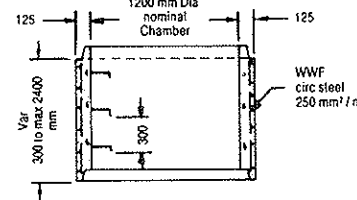
PLAN



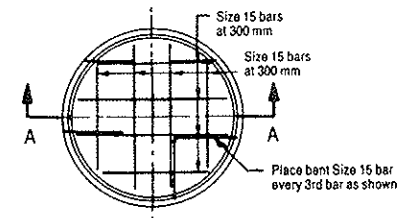
SECTION A-A  
MONOLITHIC BASE



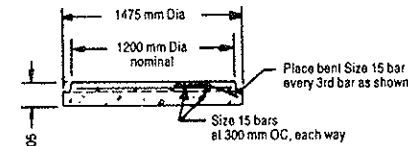
PLAN



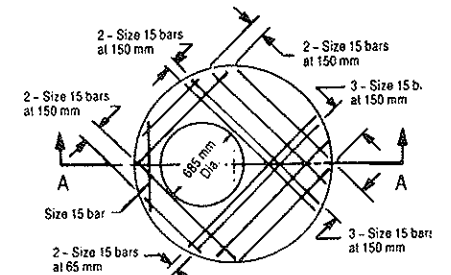
SECTION A-A  
RISER SECTION



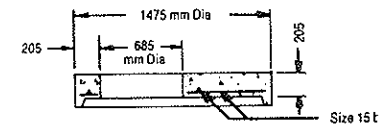
PLAN



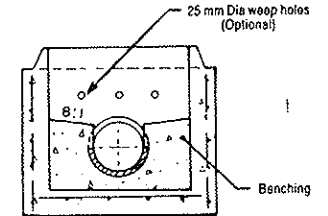
SECTION A-A  
BASE SLAB



PLAN



SECTION A-A  
FLAT CAP



BENCHING DETAIL  
(Optional)

NOTES:

- A Max. straight through pipe size: 600 mm dia.  
Max. right angle installation pipe size: 450 mm dia.
- B All reinforcing steel shall have 25 mm min. cover.
- C Weep holes, where required, shall be placed so that the bottom of the weeper on the inside and the top of the weeper on the outside are level.
- D All dimensions are in millimetres unless otherwise specified.
- E Structures exceeding 5.0 m in depth to include safety grate as per OPSD-404.02.



**CONCAST**

R.R. #3, Guelph, Ontario N1H 6H9  
Tel: 1-800-668-PIPE (7473)

**CON CAST PIPE**

No. 701.03

**1200 mm Dia.  
PRECAST CONCRETE  
MAINTENANCE HOLES (COMPONENTS)  
DEPTH - 10.0 m MAX**