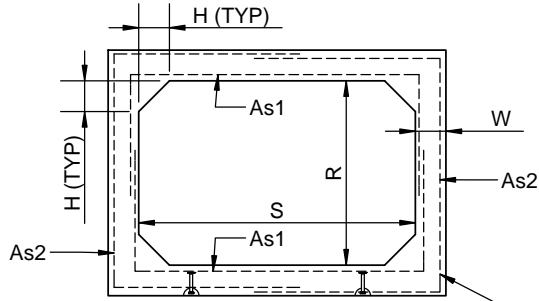
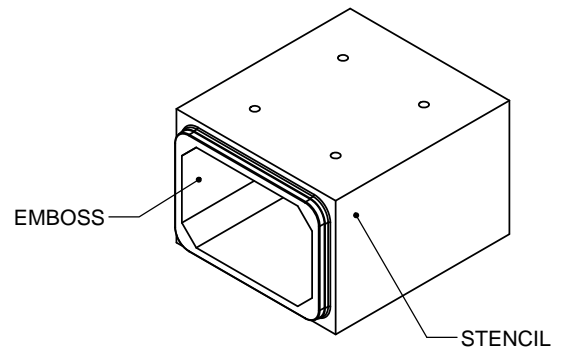


| | |
|--|--|
| STENCIL | EMBOSS |
| CCP-GUELPH OPSS1821 (SIZE) STD (D.E.C) TYPE HSe (DATE OF MFG) | CC OPSS 1821 (D.E.C) (DATE OF MFG) |

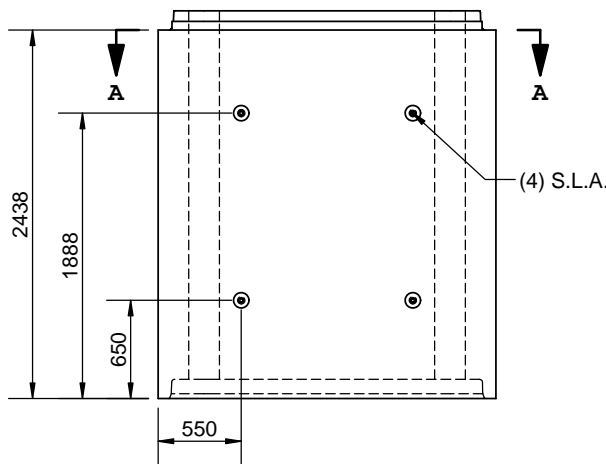


TYPICAL SECTION A

SEE REINFORCING DETAIL
WIP3BAXXXX1



ISOMETRIC VIEW
(AS INSTALLED)



LEFT
(RIGHT MIRRORED)

| PRODUCT VARIABLES | | | | | | | |
|-------------------|---------------------|------|-----|-----|-------------|-----------|----------|
| PART ID | VARIABLE DIMENSIONS | | | | S.L.A. | MASS (kg) | D.E.C |
| | S | R | W | H | | | |
| BA18091 | 1800 | 900 | 200 | 200 | 4T x 5-1/2" | 7960 | 0.6-5.5m |
| BA18121 | 1829 | 1219 | 203 | 203 | 4T x 5-1/2" | 8953 | 0.6-5.5m |
| BA24121 | 2438 | 1219 | 203 | 203 | 4T x 5-1/2" | 10444 | 0.6-3.6m |
| BA24151 | 2438 | 1524 | 203 | 203 | 4T x 5-1/2" | 11191 | 0.6-3.6m |
| BA24181 | 2438 | 1829 | 203 | 203 | 4T x 5-1/2" | 11938 | 0.6-3.6m |
| BA30151 | 3048 | 1524 | 254 | 254 | 8T x 7-1/8" | 16347 | 0.6-3.6m |
| BA30181 | 3048 | 1829 | 254 | 254 | 8T x 7-1/8" | 17282 | 0.6-3.6m |
| BA30211 | 3048 | 2134 | 254 | 254 | 8T x 7-1/8" | 17750 | 0.6-3.6m |
| BA30241 | 3048 | 2438 | 254 | 254 | 8T x 7-1/8" | 19148 | 0.6-3.6m |

ENGINEER STAMP (IF REQUIRED)

ALL DIMENSIONS ARE IN mm
DRAWINGS ARE NOT TO SCALE
ALL VIEWS AS POURED UNLESS SPECIFIED
WWF SHEETS TO ASTM A1064
WWF Fy = 485MPa (Deformed) 450MPa (Smooth)

MIN. CONC STRENGTH 35 MPa
CLEAR COVER = 40 mm ± 5 mm
TOLERANCES TO OPSS 1821
CEMENT TYPE HSe
FOR JOINT DETAIL,
SEE DWG BXXXXX1-JOINT

CON CAST PIPE (CCP) STANDARD DRAWING

STD. OPSS 1821 NOV 2015 PART BAXXXX1

TITLE
STANDARD BOX CULVERT
2438 LAY LENGTH
(DRY CAST)

| | | | |
|------|---|------|-----------|
| 5 | UPDATE AS PER OPSS1821 | SW | 2FEB16 |
| 4 | CHANGE SLA SIZE FOR 3000 SPAN SERIES | SM | 10SEP15 |
| 3 | ADD 3021 SIZE INFO | KE | 27/JUL/15 |
| 2 | AS INSTALL ISO VIEW; MOVE WC TO NEW DWG | CW | 09/JAN/12 |
| REV. | DESCRIPTION | ENG. | DATE |

| | | | | |
|----------------|------------------|-------------------|-------------------------|----------------|
| DRAWN BY CW | CHECKED BY SW | DATE 01/MAR/11 | FILE BOX UNIT.SLDDRW | PAGE 1 OF 1 |
|----------------|------------------|-------------------|-------------------------|----------------|